

AT YOUR SERVICE



USTA

MISSOURI VALLEY

Growing tennis to inspire healthier people and communities everywhere.

USTA COACHING

USTA Coaching introduces personalized learning journeys to help you grow as a coach, no matter your experience level. Whether you're a parent looking for ways to share tennis with your child or a lifelong tennis professional, each pathway is thoughtfully designed for your specific coaching role and goals, making it easier to track your progress, discover new content, and earn recognition for your development.

Choose Your Coaching Package

Realize your tennis coaching potential with packages tailored to your needs. We offer packages for every kind of coach - from accessing education to providing benefits. Not sure which package is right for you? Take a quick quiz to find the best option and learning pathway.

Online Modules

Your coaching journey starts here. Our comprehensive education library is now available, featuring everything to support your coaching development with our brand new online learning hub.

In Person Workshops

Level up your coaching skills with hands-on training designed for every stage of your journey.



Scan the QR code to take the quiz and learn more about USTA Coaching.

PROVIDERS: TENNIS TOOL CENTER



SERVE TENNIS



Tournament and program registration for both adults and juniors is now available at playtennis.usta.com/.

Scan the QR code to search by location, date or play level and get on court today!

RESOURCE LIBRARY



Scan the QR code to access resources developed by the USTA and its partners to help you teach and develop players on and off the court.

MARKETING GENERATOR



Access downloadable resources and customizable materials to help you promote tennis events and programs.

ITF WORLD TENNIS NUMBER (WTN)



World Tennis Number is a world-class rating system designed to empower players, coaches, clubs and tennis associations to elevate their tennis experiences. The WTN reflects real-time player ability and performance, providing an accurate representation of every player's skill - from amateur to pro.

AT YOUR SERVICE

JUNIOR TENNIS RESOURCES

What is the USTA Junior Pathway?

It is your child's journey until they are 18 years old through our youth tennis products under the American Development Model. The USTA's ADM offers a comprehensive framework for providers, coaches, athletes, and parents. By growing friendships, improving skills, and maximizing the potential of players at all levels, this framework will keep more participants playing our sport for a lifetime. Within the pathway, players ages 11 and over can move freely within the products that fit their age, ball color and skill set. Players ages 10 and under move through the pathway using the Net Generation PlayTracker.

What products are offered under the USTA Junior Pathway?

INTRODUCTION TO TENNIS

Youth Red Ball Programming
Tennis in Schools

TEAM COMPETITION

USTA Team Challenge
USTA Junior Team Tennis

INDIVIDUAL COMPETITION

USTA Junior Circuit
USTA Junior Tournaments
WTN Tournaments
WTN Match Play

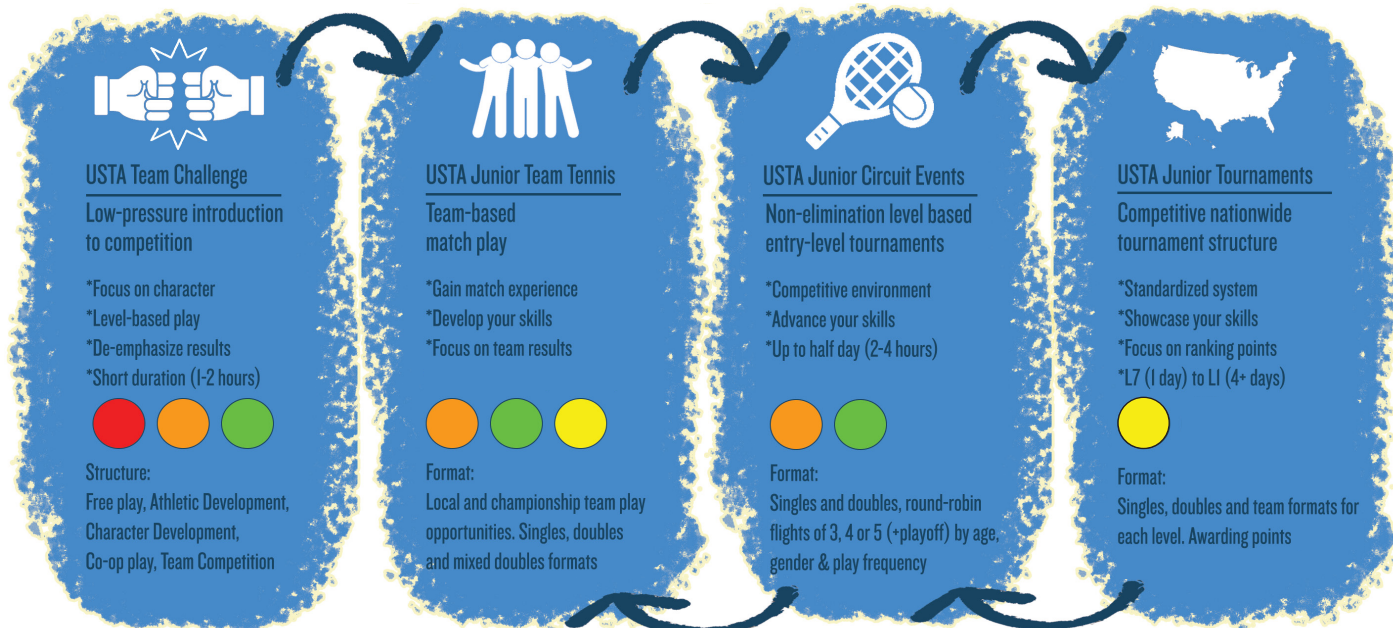


TENNIS IN SCHOOLS Whether you're teaching tennis in a P.E. class for the first time or looking to continue your coaching passion with middle and high school teams, the USTA has the resources you need to be successful on and off the court. Scan the QR code to the left for School Tennis resources.



Scan the QR code to learn more about school training opportunities.

USTA JUNIOR PATHWAY



Scan the QR code for more on the USTA Junior Pathway.

Your Journey Starts With Red

The use of ball colors changes as skills improve through the USTA Junior Pathway. The journey is not a linear progression - for example, players can play in Junior Circuit Events or Junior Team Tennis at the same time that they are participating in Junior Tournaments.

AMERICAN DEVELOPMENT MODEL

AT YOUR SERVICE

The American Development Model (ADM) applies long-term athletic development principles to guide parents and coaches as their players develop and mature. Core to the ADM is highlighting the dangers of early sport specialization and the need to develop multi-sport athletes, as well as a focus on increasing physical activity and fun. Scan the QR code to learn more and discover ADM resources.



Junior Tournament Structure



A simplified USTA Junior Tournament structure took effect in January 2021. The structure utilizes seven levels of events, ranging from Level 7 (Intermediate) to Level 1 (National Championships) and a universal ranking system that distributes points consistently across the country.

Scan the QR code to view the junior tournament structure graph.



Scan the QR code for the full junior 2026 section tournament schedule.

ADULT TENNIS RESOURCES



USTA LEAGUE Adult competitive tennis leagues for players of all skill levels that are organized into four age groups - 18 & Over, 40 & Over, 55 & Over and 65 & Over. It's a great way to stay active, improve your game, and meet other players in your area.

Scan the QR code above for more info about these adult tennis opportunities.

Scan the QR code below to search for adult 2026 section tournaments.



NTRP USTA Missouri Valley adult tournament players who participate in NTRP tournaments throughout 2026, and into early 2027, have an opportunity to earn points and qualify for the 2026 NTRP National Championships being held in April 2027.

ADULT TOURNAMENTS

USTA Missouri Valley holds adult tournaments throughout our five-state area for every age and skill level, on clay, hard, and grass court surfaces. Play a section tournament for your chance to qualify for National Championships or simply for the love of the game.



Scan the QR code if you are interested in learning more about hosting a Red Ball Tennis event.

USTA FLEX TENNIS Whether you're a weekend warrior, returning player, or total beginner, the USTA Flex app helps you find local activities and players, so you can play more and get better, on your schedule.



Scan the QR code to download the USTA Flex app.

RED BALL TENNIS Red Ball Tennis drops the pressure and dials up the fun of the classic game we all love. Whether you're new to the game, coming back after a break, or just looking to get active, Red Ball Tennis makes it easy to jump in. No formal courts, no strict rules, just high-energy play whenever and wherever you want.

AT YOUR SERVICE

COMMUNITY TENNIS RESOURCES



Scan the QR code above for more info about community programming.

TENNIS IN THE PARKS Recognizing the importance of public parks in the long-term health and growth of the sport, this initiative provides resources designed to help establish, grow and sustain tennis programming in public parks across the nation.

COMMUNITY TENNIS ASSOCIATIONS (CTAs) are not-for-profit, volunteer-based organizations supporting programs that grow the game of tennis.

THE NATIONAL JUNIOR TENNIS & LEARNING (NJTL) is a network of nonprofit youth development organizations that offer free or low-cost tennis and education programming to under-resourced youth within the section.

WHEELCHAIR USTA Missouri Valley is dedicated to providing exceptional programming and developmental opportunities to wheelchair athletes of all ages and abilities. From wheelchair-specific events to NTRP Adult Tournaments and USTA League, there are more opportunities to play tennis than ever before in 2026, the 50th Anniversary of Wheelchair Tennis.

ADAPTIVE tennis makes the game accessible for everyone. People of any age, environment, social, intellectual or physical ability are invited to participate. USTA Missouri Valley provides both competitive and community-driven play opportunities for adaptive athletes.

TENNIS VENUE SERVICES



Our Tennis Venue Services team is your partner in making your tennis facility the place to be. From tennis court resurfacing, court amenities, and lighting upgrades to full-scale construction projects, scan the QR code to find out how we can help.

2026 grants.

USTA Missouri Valley offers grants to assist organizations to initiate or expand their tennis programming activities.



Scan the QR code to apply and learn more about the grant guidelines.

2026 Grant Deadlines:

- Friday, February 13
- Friday, April 10
- Friday, July 10
- Friday, October 16

• SECTION-LEVEL GRANT CATEGORIES

- Serving Up Tennis Grants (Not-for-Profit Organizations)
- Pro-Circuit Assistance Grant
- Adaptive Programming Assistance Grant
- Wheelchair Programming Assistance Grant
- Facility Assistance Grant
- National Tennis Month Program Assistance (May 2026)
-Deadline: April 10, 2026

• DISTRICT-LEVEL GRANT CATEGORIES

- Deadlines are specified within each district grant guideline if chosen.

If you have questions please contact Tara Williams:

Senior Manager, Junior Team Play
913-302-5901 • williams@movalley.usta.com